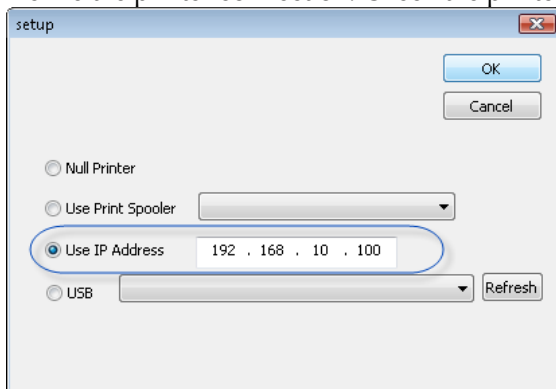


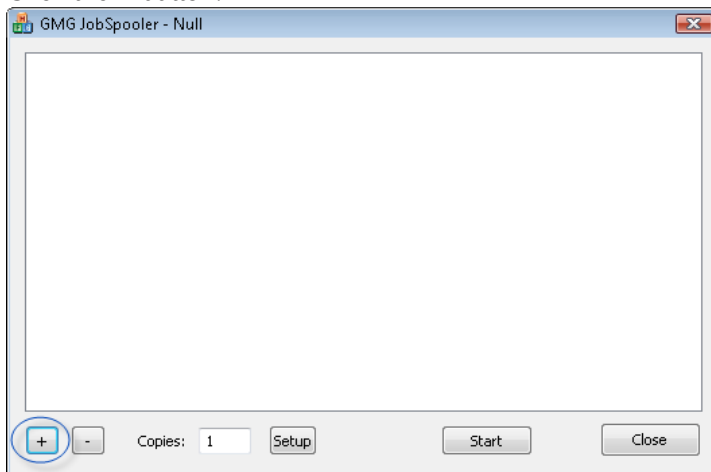
How to print the test forms

Note: Before starting the paper feed test, it is recommended to clean the print heads and to print a nozzle pattern.

1. On the printer panel, set the **Roll Paper Margin** to 3 mm.
2. Download and unzip the *JobSpooler.zip* file and the PRN files from the GMG web site.
3. Start the *JobSpooler.exe*. (No installation is required.)
4. Click the **Setup** button.
5. Define the printer connection. Check the printer settings in GMG ColorProof as a reference, if required.

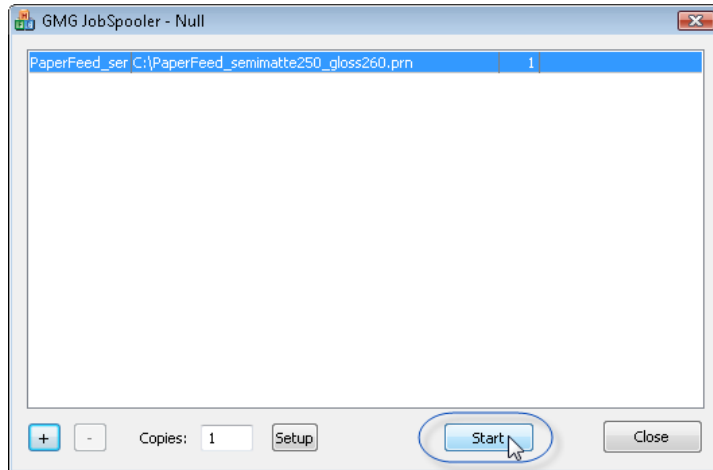


6. Click the + button.



7. Browse your folders and select the PRN file.

8. Click **Start**.



A test page with test images will be printed.